

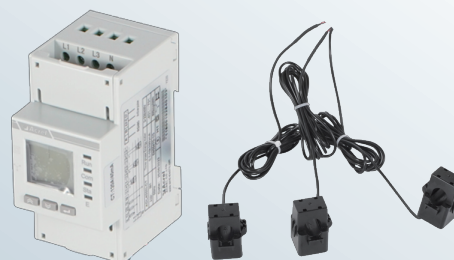
# TSUN Monitoring (RS485)



ADL200N-CT/ADL400N-CT



ADL200N-CT



ADL400N-CT

Power Meter is a power control device for TSUN's products with RS485. It can collect the current grid output power status. At the same time, it is connected to the home network, communicates with TSUN's products with RS485 under the same network, and controls the output power of the entire Solar & Storage system.

## Power Meter (RS485, CT Connected)

Meter	ADL200N-CT	ADL400N-CT
Grid Type	Single-phase	Three-phase
Data Interval	<200 ms	<200 ms
Nominal Voltage	230 V	230 V/400 V
Frequency Range	45-65 Hz	
Input Current	80A, 120A, 200A, 300A	
Consumption	<0.2 VA	
Accuracy	±0.5%	
Sensor	CT	
Communication	RS485	

TSUNESS Co., Ltd

sales@tsun-ess.com www.tsun-ess.com +86-512-66186028