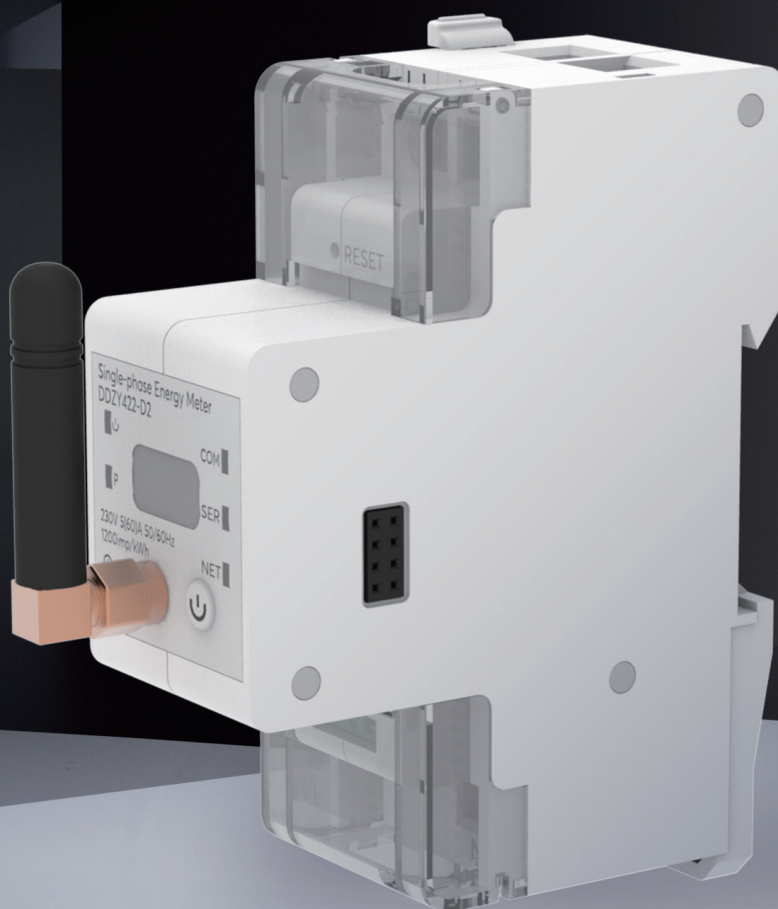


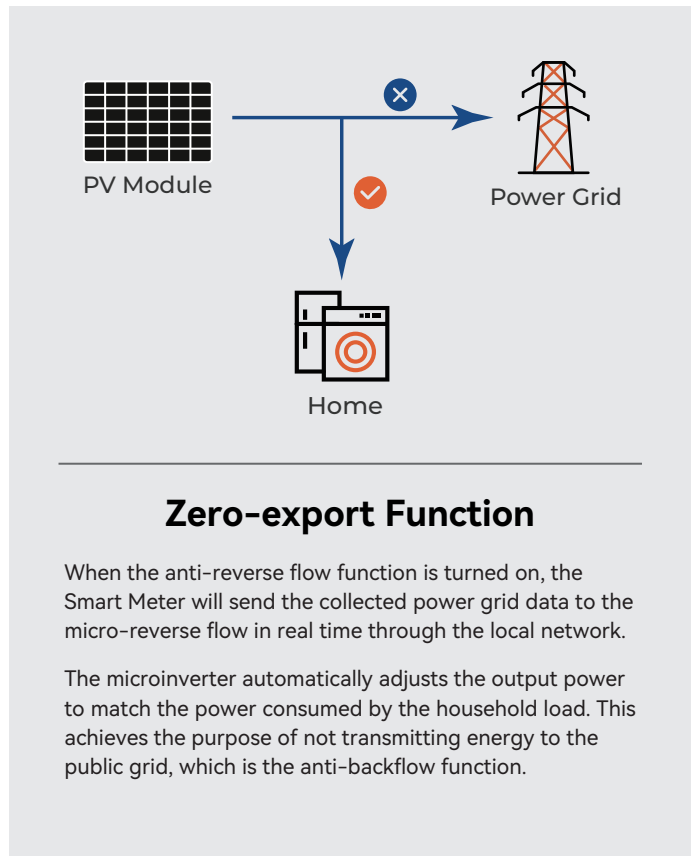
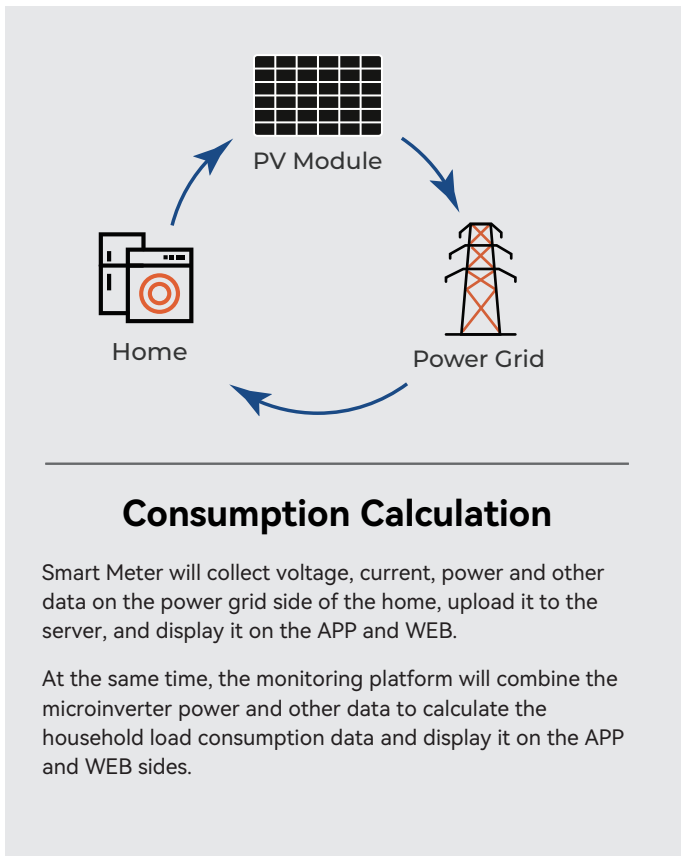
# Smart Meter (WiFi)

TSOL-MG3-MS



**TSUNESS Co., Ltd**

sales@tsun-ess.com    www.tsun-ess.com    +86-512-66186028



## Technical Data

Model	TSOL-MG3-MS
<b>Communication</b>	
Wireless Type	WiFi
Working Frequency	2.412GHz-2.484GHz
Local COM	RS485
Serial Parameter	Address 001/9600bps/E/8/1
Data Interval	5 mins
<b>Meter</b>	
Rated Voltage	AC 230V 5 (60)A 50/60Hz
Power Range	0-999999.99kWh
Accuracy Class	1.0
Consumption	≤3.5W
<b>Environment</b>	
Working Temperature	-30°C-+70°C
Relative Humidity	≤85%(No condensation), Altitude<3000m
Atmospheric Pressure	70kPa-106kPa
Transportation&Storage	Temperature: -40°C-85°C, Relative Humidity≤85%