

Easy Solar Kit




Balcony


Balcony Air Angled

TSOL-ESK400-Air(A) / TSOL-ESK800-Air(A)

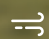


Product
Warranty

 Lightweight


 All in one Design

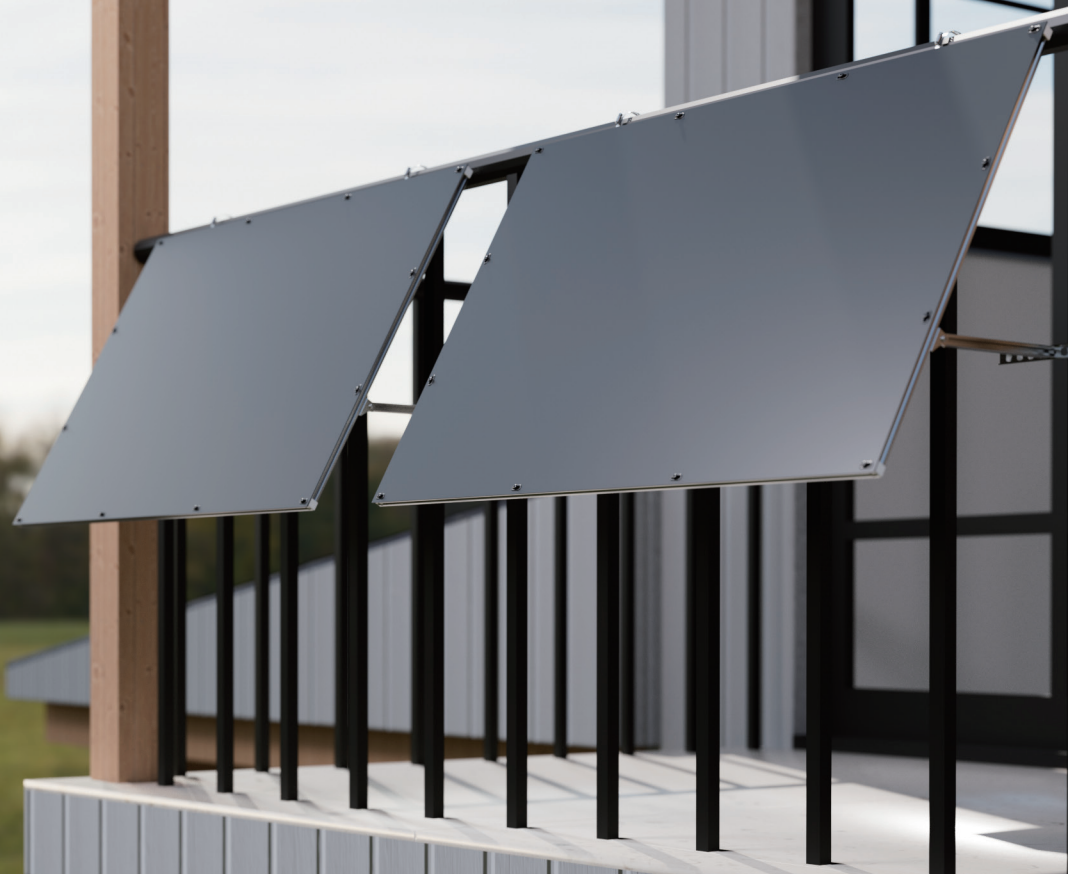
 Highly Waterproof

 Wind Prevention

 Plug & Play

 Built-in WiFi, APP Remote Monitoring

 Output Power 400W/800W
Can be Adjusted According to
Local Regulations



TSUNESS Co., Ltd

sales@tsun-ess.com www.tsun-ess.com +86-512-66186028

Technical Data

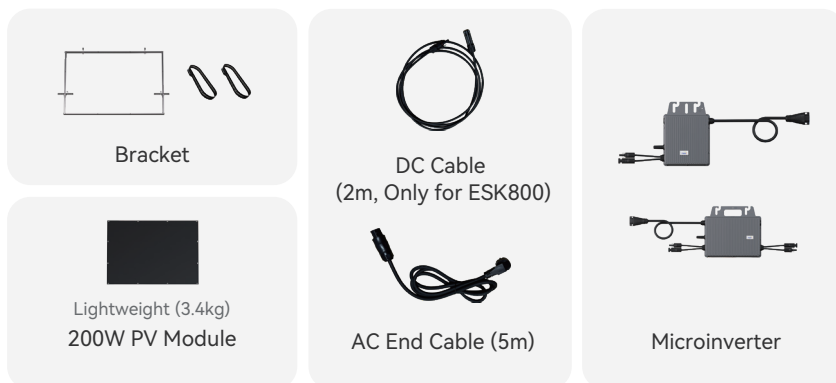
Model	TSOL-ESK400-BA	TSOL-ESK800-BA
PV Module Parameter *		
Module Power(Pmpp @STC)	200 * 2	200 * 4
Max. Module Efficiency	20.4%	20.4%
Temp. Coef. (Power)	-0.34%/°C	-0.34%/°C
Color	Black	Black
AC Output Parameter		
Max. System Continuous Output Power (W)**	400	800
Max. Output Current (A)	2	4
Nominal Output Voltage (V)***	220/230/240	
Nominal Frequency (Hz)***	50/60	
Power Factor	>0.99	
Output Current Harmonic Distortion	<3%	
Length of AC End Cable***	5m (10m, 15m optional)	
Certification		
Solar Module	CE,TUV,UL,CQC,IEC 61215,IEC 61730	
Microinverter	CE-LVD,CE-EMC,CE-RED,VDE 4105,EN 50549-1	
Bracket	EN 10204:2017, EN 1090-1:2009+A1: 2011	
Environmental Parameter		
Environmental Protection Rating	IP67	
Operating Ambient Temperature Range	-25 °C to 65 °C	
Relative Humidity	0-100%	
Max. Operating Altitude Without Derating [m]	2000	
Mechanical Parameter		
Weight [kg]	13	25
Package Dimensions (W×H×D mm)	1340*960*65	1340*960*65 *2pcs
Warranty	12 years	

* The colour , brand and power of the solar module can be customized if the PV module is compatible to ESK system.

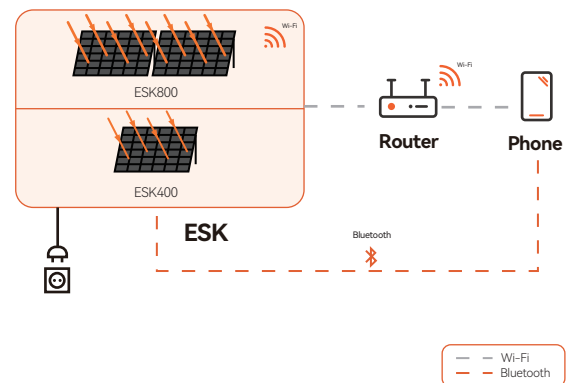
** The output power of the system can be limited to according to local regulations.

*** The AC voltage , frequency range and plug type may vary depending on specific country grid.

Standard Configuration



System Diagram



For more information , visit / contact us at www.tsun-ess.com

© 2024 TSUNESS . All rights reserved. All specifications are subject to change without prior notice.