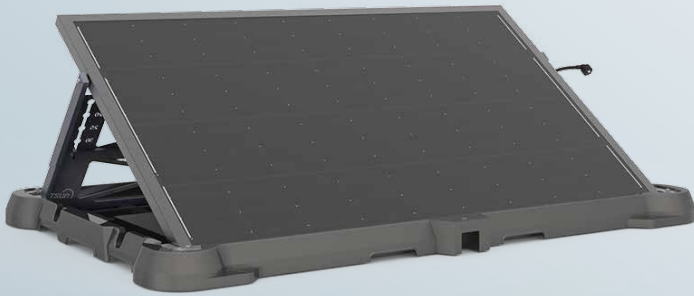


EASY SOLAR KIT STANDARD VS. ECONOMY



EASY SOLAR KIT(STANDARD)
TSOL-ESK300
TSOL-ESK350



EASY SOLAR KIT(ECONOMY)
TSOL-ESK350-E, TSOL-ESK400-E
TSOL-ESK800-E, TSOL-ESK1600-E
TSOL-ESK800L-E

1

DIFFERENT CONFIGURATION

EASY SOLAR KIT(STANDARD)



The angle can be adjusted to obtain the best local PV inclination.

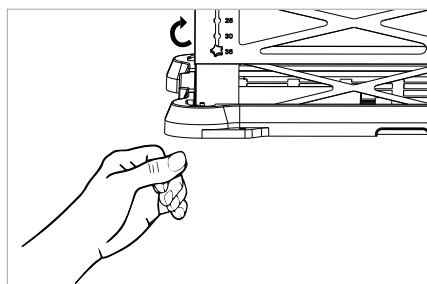
EASY SOLAR KIT(ECONOMY)



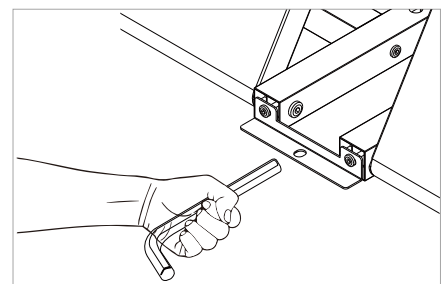
Fixed angle bracket is standard configuration, adjustable angle bracket is optional configuration.

2

DIFFERENT INSTALLATION METHOD

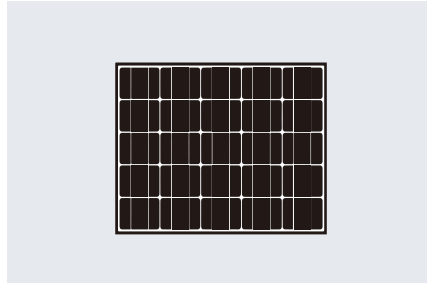


All locks can be operated manually, no professional tools are needed, easy to use.

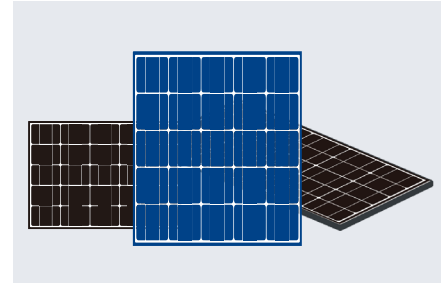


Tools are required for operation, and operation tools are provided in the product box.

3 DIFFERENT ADAPTATION MODULE

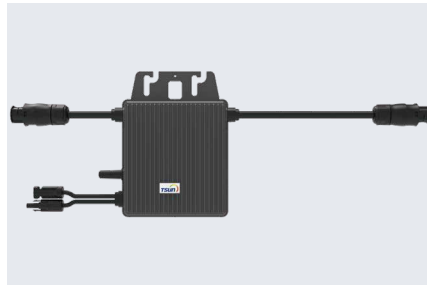


Suitable for fixed size PV modules.

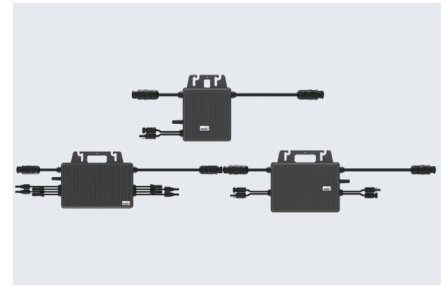


High flexibility, products can be customized according to PV modules power and brand.

4 DIFFERENT ADAPTATION MICRO INVERTER



Only suitable for TSOL-M350 micro inverter.



Suitable for TSOL-M350, TSOL-M800 and TSOL-M1600 micro inverter, more economical.

5 DIFFERENT BASEPLATE MATERIAL



Injection molding baseplate, more beautiful.

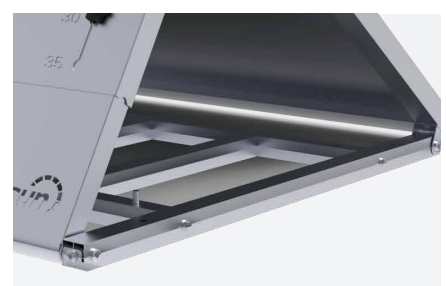


Bracket and baseplate are made of aluminum alloy material, high strength.

6 DIFFERENT BASEPLATE DESIGN



The baseplate wraps the module frame to form stronger protection.



Rely on the frame protection of the PV modules itself.

7 DIFFERENT SIZE



Slightly larger than PV modules.



Length and width are the same as PV modules.